

## **FORMAT for CASE COLLECTION (WP2)**

---

*SECTION 1 (cover page): Introduction (in English)*

### **Name of the Case**

**RuhrFutur**

### **Abstract**

RuhrFutur is an initiative between five cities, six universities and the state government of Northrhine-Westfalia founded by the Stiftung Mercator. The partners would like to improve the education for children and youth in the Ruhr-Region. It is the first time that these institutions collaborate. All the activities are based on the idea of “collective impact”. The goals of the initiative are:

- Individual support: Designing a system to best strengthen personality, and develop potential and skills
- The establishment of integrated language education and self-expression training
- The development of a model for successful inter- and intra-municipality cooperation that includes universities
- The design of a successful partnership of schools and universities to motivate more eligible students to pursue higher education
- The achievement of an equalisation of the graduation rate of students from less-well educated backgrounds and those from well-educated families.

### **Website**

[www.ruhrfutur.de](http://www.ruhrfutur.de)

### **Contacts (SIKE team)**

Patrick Oberberg, Germany, Social Impact Lab Duisburg, [oberberg@socialimpact.eu](mailto:oberberg@socialimpact.eu)

---

## SECTION 2: Case description

### RuhrFutur

#### Objectives

RuhrFutur will improve the education for children and youth by changing the cooperation between cities, universities and the state government. The problems they would like to solve are nearly the same and it makes more sense to work together and assemble synergies by working together. The partners working together starting with early education through primary school, secondary school until university. Other topics are language education and data analysis.

Their goals are:

- Individual support
- Integrated language education
- Inter- and intra-municipality cooperation, including universities
- Successful partnership between schools and universities
- An equalization of the graduation rate of students from less-well educated backgrounds and those from well-educated families.

Together the partners identify opportunities and challenges and develop small projects to achieve their goals.

#### Clients, audience

There are different clients:

- children and youth
- nursery teachers, teachers, professors
- people who are working in the administration and management in the cities, the universities and the state government

#### Position along the SI Spiral

One of the following:

- Identify Opportunities & challenges → completed

- Generate ideas → completed
- Develop & test → completed
- Making the case → completed
- Deliver & implement → contemporary issue
- Growing & scaling
- Changing systems

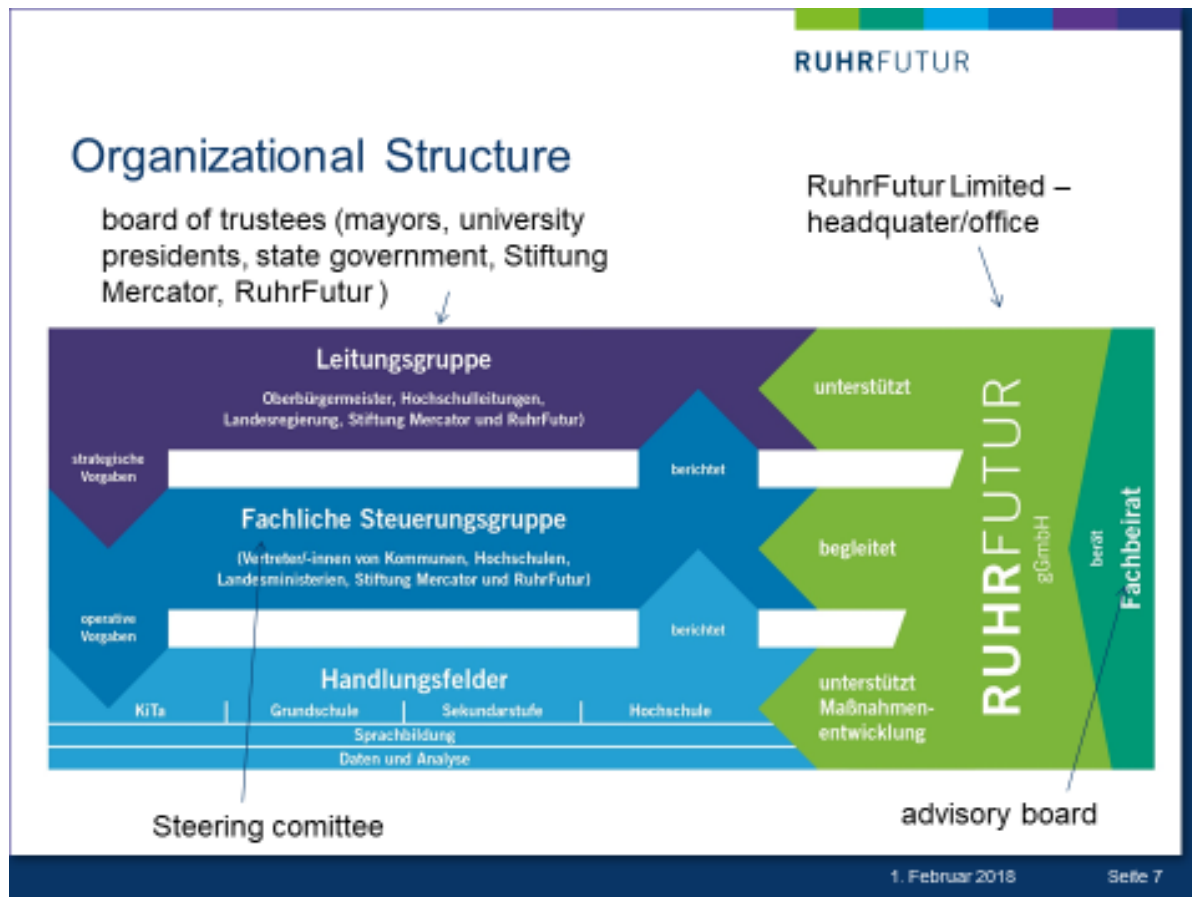
### **Relationship with HEI(s) (High Education Institutions)**

- The higher education institutions are part of the partnership and are totally involved in any case.
- On the one hand the higher education institutions learn a lot about their future students and are able to develop and design a program which fits better for their students.  
On the other hand they are able to change their administration and management and can be a good partner for cities and the state government to develop the region and are able to identify challenges and opportunities to change and to develop the region in many cases.

### **Finance model and resources**

It is very complex: 15 million euro over five years to get all the partners on the table and to start some projects. There are a backbone organization with 20 employees.

## Methodology



## Products, results

Toolkits, publications, courses, network events etc.

For an good overview go to the website [www.ruhrfutur.de](http://www.ruhrfutur.de)

## Impact and results

Actually there are no indicators of impact.

## Overall impact

Better education and better collaboration between cities, universities and the state government (governance),

## Images



<http://www.ruhrfutur.de/aktuelles/tag-begegnung>

## Other resources

RuhrFutur is very complex but unique cooperation all over Europe. There are no other cooperations or partnerships which are working together with the thought of “collective impact” in Europe.